

**SB**  
SERIES

MOBILE GANTRY CRANES



15 30 50 70 100 US TONS AND GREATER



CONCRETE



ENERGY



STEEL



MATERIAL HANDLING

## THE *SINGLE BEST* ALTERNATIVE TO OTHER LIFTING METHODS

The **SB series** is ideally suited to today's marketplace, in which components are getting longer, tandem picks are becoming more common, and plant managers are looking for a more cost-effective way to do business. With just a single traversing beam and single hook, any load inside the plant can be easily transported to your yard without extra handling equipment.

Our revolutionary SB series currently offers gantry cranes that range from 15 ton to 100 ton (U.S.) capacity and greater. Our engineering team will work closely with you to ensure that your SB series gantry crane meets your needs and surpasses your expectations, and we'll continue to partner with you as your business moves forward.



# STANDARD FEATURES THAT WILL GIVE YOU THE PRODUCTIVITY ADVANTAGE

**SB**  
SERIES



## ARTICULATED PIVOT TRUNNION

Shuttlelift's articulated Pivot Trunnion allows the crane's frame to articulate while it travels over uneven terrain without causing structural damage or risking the safety of the load.



## PROPORTIONAL CONTROLS

The crane is equipped with fully proportional controls allowing precision movement of all crane functions, resulting in complete operator control.



## EASY ACCESS ENGINE COMPARTMENT

Shuttlelift's Easy-Access Engine Compartment allows all routine maintenance points to be easy to reach.



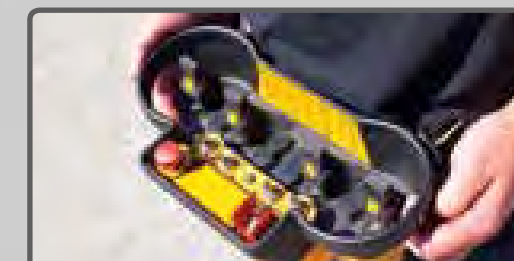
## LOW MOUNTED HOISTS

With hoists mounted to the lower side beam, the operator can easily see the reeving of the wire rope and can perform needed maintenance without the requirement of a manlift.



## CANTILEVER WHEEL FRAMES

Shuttlelift's Cantilever Wheel Frame design provides increased efficiency if tires need to be serviced or replaced.



## WIRELESS REMOTE CONTROL

Shuttlelift's Wireless Remote Control increases operator visibility of the load by allowing the operator to be anywhere around the load or work being performed, improving operational safety and ensuring maximum maneuverability. The remote is laid out in the same format as the backup operator cab controls for an extra measure of efficiency and safety.





## ALL-WHEEL ELECTRONIC STEERING

Shuttlelift's All-Wheel Electronic Steering provides maximum flexibility, maneuverability and precision handling while operating in confined spaces. Available steering modes include 2WS 90° Front, 2WS 90° Rear, Crab, Transverse, Carousel and Coordinate.



## INCREASED GRADEABILITY

Shuttlelift provides Increased Gradeability through additional wheel motors that allow its gantry cranes to travel over inclined or uneven surfaces. This increases the crane's traveling efficiency, and it allows you to maximize your yard space by utilizing areas once deemed unusable.



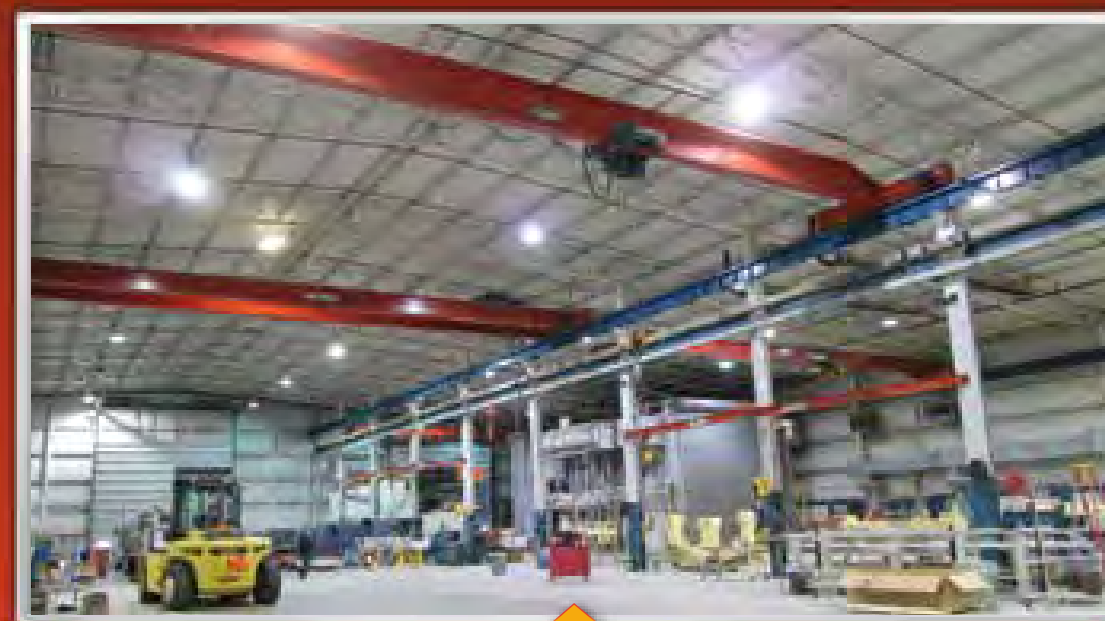
## ADDED HEIGHT AND/OR WIDTH

At Shuttlelift, we modify the height and width of our cranes to meet specific customer requirements.

**SB**  
SERIES

## MORE **VERSATILE** THAN YOUR CONVENTIONAL OVERHEAD CRANE

Whether you have multiple bays that require lifting capabilities or transporting product from indoor to out, our single beam gantry crane can help improve your return on investment. The possibilities are endless with a SB series crane from Shuttlelift. Contact us today to see how we can solve your lifting challenges.



**VS**



**DB**  
SERIES

**MOBILE GANTRY CRANES**



30 50 70 100 140 200 US TONS AND GREATER



CONCRETE



ENERGY



STEEL



MATERIAL HANDLING



VESSELS

## GAIN THE LIFTING **ADVANTAGE** FOR LESS THAN YOU THINK

The **DB series** rubber-tired gantry crane is ideally suited to today's marketplace, in which plant managers are looking for more cost-effective ways to do business. The DB series high-quality performance, efficiency and adaptable design were built in response to a growing need for cost effective lifting solutions for those needing to lift heavy, bulky items from production to transport. For over half a century, we've been dedicated to superior engineering and customer-driven design features.

Our DB series currently offers gantry cranes that range from 30 ton to 200 ton (U.S.) capacity and greater. Each DB model is engineered as a unique lifting solution that will solve the toughest material handling challenges you have. Our engineering team will also work closely with you to ensure that your DB series gantry crane meets your needs and surpasses your expectations, and we'll continue to partner with you as your business moves forward.



DB 200





# STANDARD FEATURES THAT WILL GIVE YOU THE PRODUCTIVITY ADVANTAGE

**DB**  
SERIES



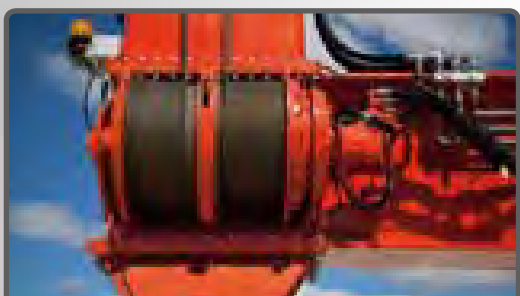
## PROPORTIONAL CONTROLS

The crane is equipped with fully proportional controls allowing precision movement of all crane functions, resulting in complete operator control.



## SPACIOUS CAB

With 58.75 square feet (5.5 sq m) of glass, 19.8 square feet (1.8 sq m) of floor space, and 74 inches (1.9 m) of headroom, the spacious cab provides exceptional operator visibility. In addition, the 180 degree indexable seat position, adjustable seat height and armrest allow for greater ergonomics and operator comfort. A fully integrated ladder and access platform are included as standard.



## LOW MOUNTED HOISTS

With hoists mounted to the lower side beam, the operator can easily see the reeving of the wire rope and can perform needed maintenance without the requirement of a manlift.



## FORMED BOX SECTION STRUCTURE

Shuttlelift's formed box-section design maximizes the crane's durability by minimizing points of load stress concentration.



## EMERGENCY SHUTDOWN

Emergency Shutdown controls are located at each corner of the crane to allow ground personnel around the crane's perimeter to stop the crane if unsafe conditions occur.



## HYDRAULIC OIL COOLER

The Hydraulic Oil Cooler maintains the hydraulic oil temperature allowing the crane to work more efficiently at higher duty cycles and in harsh work environments maximizing component life.

**SL**  
SERIES

MOBILE GANTRY CRANES



15 25 35 50 75 100 150 200 250 300 400 500 600 700 800 1000 US TONS AND GREATER





AEROSPACE



CONCRETE



CONSTRUCTION



ENERGY



MATERIAL HANDLING



WIND

# LIFT YOUR PRODUCTIVITY

SL  
SERIES

## THE **ULTIMATE** CRANE BACKED BY OUR 50 YEARS OF ENGINEERING EXPERIENCE

The **SL series** has all the benefits that come with our 50 years of engineering expertise, providing our most economical solution. Our SL series is perfect for customers looking for a gantry crane with lower duty cycle work but still has versatility and security of using a rubber-tired gantry crane. A SL series from Shuttlelift will perform almost any task that most other gantry cranes can, but will do so with less load maneuverability (due to the non-traverse capability).

Our SL series currently offers gantry cranes that range from 15 ton to 1,000 ton (U.S.) capacity and greater. Each SL model is engineered as a unique lifting solution that will solve your material handling challenges. Our engineering team will also work closely with you to ensure that your SL series gantry crane meets your needs and surpasses your expectations, and we'll continue to partner with you as your business moves forward.



# STANDARD FEATURES THAT WILL GIVE YOU THE PRODUCTIVITY ADVANTAGE



**PROPORTIONAL CONTROLS**

The crane is equipped with fully proportional controls allowing precision movement of all crane functions, resulting in complete operator control.



**GROUND LEVEL ACCESS TO ALL FILTERS**

Ground Level Access to All Filters allows for routine maintenance points to be easy to reach and service.



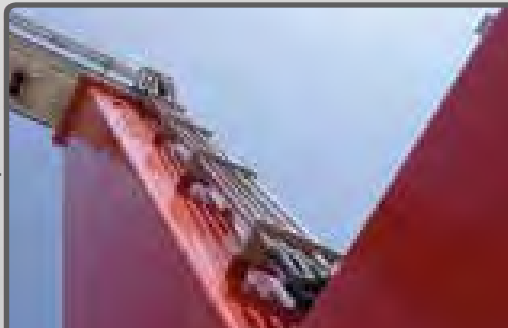
**LOW MOUNTED HOISTS**

With hoists mounted to the lower side beam, the operator can easily see the reeving of the wire rope and can perform needed maintenance without the requirement of a manlift.



**ARTICULATED PIVOT TRUNNION**

Shuttlelift's articulated Pivot Trunnion allows the crane's frame to articulate while it travels over uneven terrain without causing structural damage or risking the safety of the load.



**FORMED BOX SECTION STRUCTURE**

Shuttlelift's formed box-section design maximizes the crane's durability by minimizing points of load stress concentration.



**EMERGENCY SHUTDOWN**

Emergency Shutdown controls are located at each corner of the crane to allow ground personnel around the crane's perimeter to stop the crane if unsafe conditions occur.





**WIRELESS LOAD READ-OUT**  
Our optional Wireless Load Read-Out is available with two or four hooks depending on the need and application. The display provides load weight information eliminating the need to weigh the load prior to lifting.

**SHUTTLELIFT'S WIRELESS REMOTE CONTROL**  
increases operator visibility of the load by allowing the operator to be anywhere around the load or work being performed, improving operational safety and ensuring maximum maneuverability. The remote is laid out in the same format as the backup operator cab controls for an extra measure of efficiency and safety.



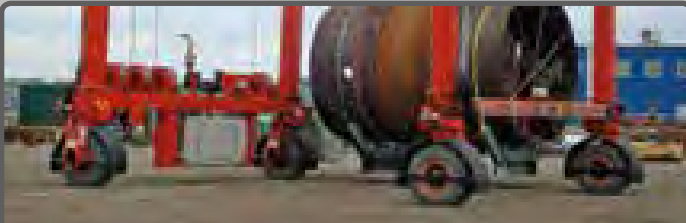
**INCREASED GRADEABILITY**  
Shuttlelift provides Increased Gradeability through additional wheel motors that allow its gantry cranes to travel over inclined or uneven surfaces. This increases the crane's traveling efficiency, and it allows you to maximize your yard space by utilizing areas once deemed unusable.

**CUSTOM SPREADER ASSEMBLIES**

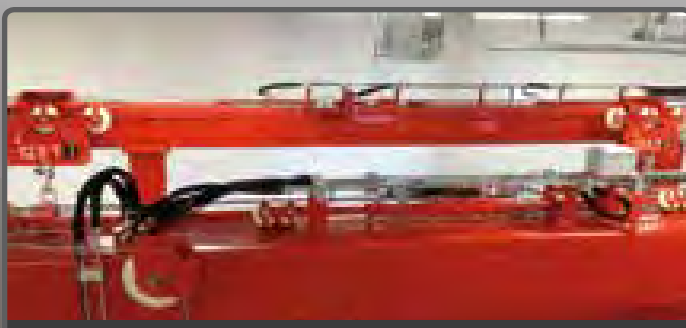
Shuttlelift's Custom Spreader Assemblies are the critical link between your gantry crane and the load(s) being lifted. At Shuttlelift, we'll work with you to discover all of your lifting scenarios, and then design the spreader to have the versatility to meet multiple lifting needs if required.



**ADDED HEIGHT AND/OR WIDTH**  
At Shuttlelift, we modify the height and width of our cranes to meet specific customer requirements.



**ALL-WHEEL ELECTRONIC STEERING**  
Shuttlelift's All-Wheel Electronic Steering provides maximum flexibility, maneuverability and precision handling while operating in confined spaces. Available steering modes include 2WS 90° Front, 2WS 90° Rear, Crab, Transverse, Carousel and Coordinate.



**BLOCK ADJUSTMENT**  
The Shuttlelift Block Adjustment option provides versatile longitudinal pick point locations with powered movement to accommodate a variety of different loads.



# WE ARE HERE (AND EVERYWHERE) FOR YOU



As a global leader we need to focus on two things— leading and being global. Being there to support our customers in sales and maintenance support is a huge part of our success because it's a huge part of yours. For our customers, genuine peace of mind comes from genuine parts installed by our highly-experience technicians in an expedited time frame. We know that every day you wait for a part may result in a lost day of production, so we've streamlined our parts department to perform to the standard you'd expect from Shuttlelift.

#### **GENUINE PEACE OF MIND WITH SHUTTLELIFT'S CUSTOMERCARE**

No one understands your Shuttlelift gantry crane better than our highly dedicated service team of lifting professionals. Trust the experts for comprehensive service.

#### **SUPERIOR SERVICE AND REPAIR ASSISTANCE**

Our service team is there to help you maintain and repair your equipment and minimize costly downtime. These highly trained and experienced lifting professionals have been hand-picked to provide exceptional customer service with care and integrity.



#### **SHUTTLELIFT**

49 E. Yew St., Sturgeon Bay, WI 54235 USA

Phone: 920.743.8650

Fax: 920.743.1522

[sales@shuttlelift.com](mailto:sales@shuttlelift.com)

**[WWW.SHUTTLELIFT.COM](http://WWW.SHUTTLELIFT.COM)**

**ISL**  
SERIES

**MOBILE GANTRY CRANES**



15 30 40 50 60 70 100 150 US TONS AND GREATER



AEROSPACE



CONCRETE



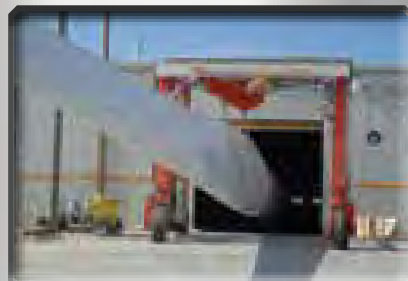
CONSTRUCTION



ENERGY



STEEL



WIND

# COVER UNEVEN TERRAIN WITH EASE

ISL  
SERIES

## GAIN THE LIFTING **ADVANTAGE** WITH INCREASED PRODUCTIVITY, MORE VALUE AND A PARTNER THAT CARES!

The ISL series is our premier line of Gantry Cranes. With its five beam upper structure and articulated Pivot Trunnion, the ISL series can move material over rugged terrain. They are also engineered for higher duty cycles due to increased hoisting speeds, as well as increased ground speed capabilities, which will enable you to be much more efficient. Our ISL cranes have fully traversing hooks that move the entire width of the crane for easy loading and unloading, which again, adds to efficiency.

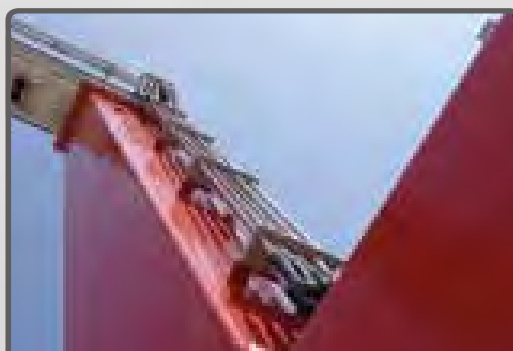
Our premier ISL series currently offers gantry cranes that range from 15 ton to 150 ton (U.S.) capacity and greater. Each ISL model is engineered as a unique lifting solution that will solve the toughest material handling challenges you have. Our engineering team will also work closely with you to ensure that your ISL series gantry crane meets your needs and surpasses your expectations, and we'll continue to partner with you as your business moves forward.





# STANDARD FEATURES THAT WILL GIVE YOU THE PRODUCTIVITY ADVANTAGE

ISL  
SERIES



## FORMED BOX SECTION STRUCTURE

Shuttlelift's formed box-section design maximizes the crane's durability by minimizing points of load stress concentration.



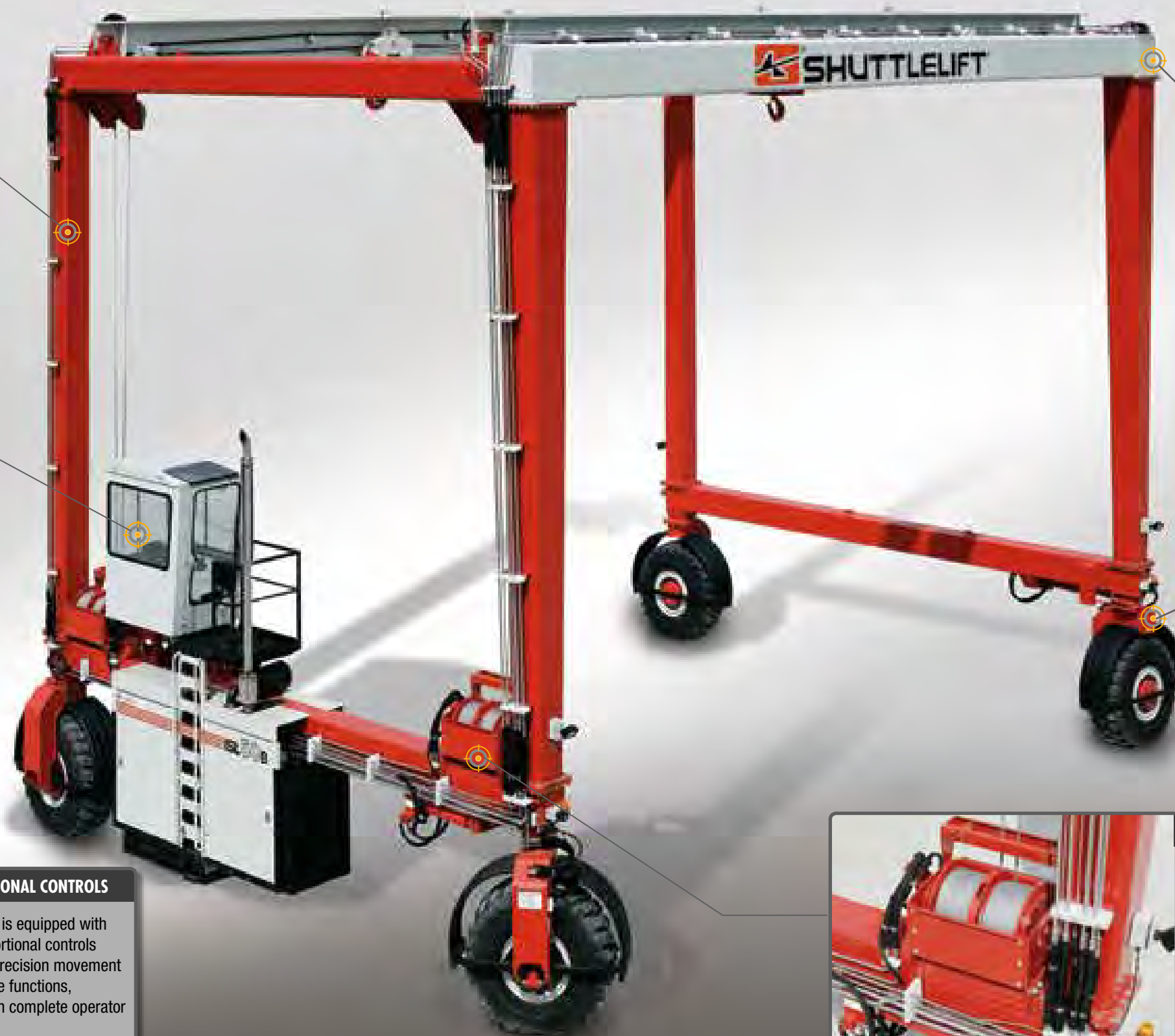
## SPACIOUS CAB

With 58.75 square feet (5.5 sq m) of glass, 19.8 square feet (1.8 sq m) of floor space, and 74 inches (1.9 m) of headroom, the spacious cab provides exceptional operator visibility. In addition, the 180 degree indexable seat position, adjustable seat height and armrest allow for greater ergonomics and operator comfort. A fully integrated ladder and access platform are included as standard.



## PROPORTIONAL CONTROLS

The crane is equipped with fully proportional controls allowing precision movement of all crane functions, resulting in complete operator control.



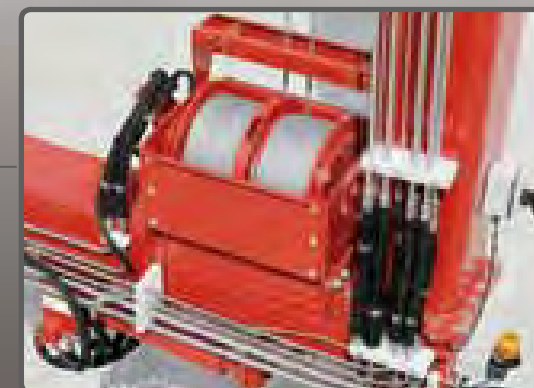
## ARTICULATED PIVOT TRUNNION

Shuttlelift's articulated Pivot Trunnion allows the crane's frame to articulate while it travels over uneven terrain without causing structural damage or risking the safety of the load.



## EMERGENCY SHUTDOWN

Emergency Shutdown controls are located at each corner of the crane to allow ground personnel around the crane's perimeter to stop the crane if unsafe conditions occur.



## LOW MOUNTED HOISTS

With hoists mounted to the lower side beam, the operator can easily see the reeving of the wire rope and can perform needed maintenance without the requirement of a manlift.



**WIRELESS LOAD READ-OUT**

Our optional Wireless Load Read-Out is available with two or four hooks depending on the need and application. The display provides load weight information eliminating the need to weigh the load prior to lifting.

**SHUTTLELIFT'S  
WIRELESS REMOTE CONTROL**

increases operator visibility of the load by allowing the operator to be anywhere around the load or work being performed, improving operational safety and ensuring maximum maneuverability. The remote is laid out in the same format as the backup operator cab controls for an extra measure of efficiency and safety.



**INCREASED GRADEABILITY**

Shuttlelift provides Increased Gradeability through additional wheel motors that allow its gantry cranes to travel over inclined or uneven surfaces. This increases the crane's traveling efficiency, and it allows you to maximize your yard space by utilizing areas once deemed unusable.

**CUSTOM SPREADER ASSEMBLIES**

Shuttlelift's Custom Spreader Assemblies are the critical link between your gantry crane and the load(s) being lifted. At Shuttlelift, we'll work with you to discover all of your lifting scenarios, and then design the spreader to have the versatility to meet multiple lifting needs if required.



**ADDED HEIGHT AND/OR WIDTH**

At Shuttlelift, we modify the height and width of our cranes to meet specific customer requirements.



**ALL-WHEEL ELECTRONIC STEERING**

Shuttlelift's All-Wheel Electronic Steering provides maximum flexibility, maneuverability and precision handling while operating in confined spaces. Available steering modes include 2WS 90° Front, 2WS 90° Rear, Crab, Transverse, Carousel and Coordinate.



**DUAL TROLLEYS**

The Shuttlelift Dual trolley options provides two pick points per trolley beam. Spacing can be fixed or have powered variable spacing to accommodate specific load pick points.



# WE ARE HERE (AND EVERYWHERE) FOR YOU



As a global leader we need to focus on two things— leading and being global. Being there to support our customers in sales and maintenance support is a huge part of our success because it's a huge part of yours. For our customers, genuine peace of mind comes from genuine parts installed by our highly-experience technicians in an expedited time frame. We know that every day you wait for a part may result in a lost day of production, so we've streamlined our parts department to perform to the standard you'd expect from Shuttlelift.

#### **GENUINE PEACE OF MIND WITH SHUTTLELIFT'S CUSTOMERCARE**

No one understands your Shuttlelift gantry crane better than our highly dedicated service team of lifting professionals. Trust the experts for comprehensive service.

#### **SUPERIOR SERVICE AND REPAIR ASSISTANCE**

Our service team is there to help you maintain and repair your equipment and minimize costly downtime. These highly trained and experienced lifting professionals have been hand-picked to provide exceptional customer service with care and integrity.



#### **SHUTTLELIFT**

49 E. Yew St., Sturgeon Bay, WI 54235 USA

Phone: 920.743.8650

Fax: 920.743.1522

[sales@shuttlelift.com](mailto:sales@shuttlelift.com)

**[WWW.SHUTTLELIFT.COM](http://WWW.SHUTTLELIFT.COM)**